

CALIFORNIA
SDM® REUNIFICATION REASSESSMENT

r:06/15

Case Name: _____ Date Completed: _____/_____/_____

Case #: _____ Household Assessed: _____

Is this the removal household? Yes No Assessment # (mark): 1 2 3 4 5 6

To be completed for each household to which a child may be returned (e.g., father’s home, mother’s home).

A. REUNIFICATION RISK REASSESSMENT

R1.	Risk level on most recent referral (not reunification risk level or risk reassessment)	Score
	a. Low.....	0
	b. Moderate.....	3
	c. High.....	4
	d. Very high.....	5
R2.	Has there been a new substantiation since the initial risk assessment or last reunification reassessment?	
	a. No	0
	b. Yes.....	2
R3.	Caregiver’s progress with case plan objectives (as indicated by behavioral change) (Compliance with/attendance of services is not sufficient to indicate behavioral change.)	
P	S	
<input type="checkbox"/>	<input type="checkbox"/> a. Demonstrates new skills and behaviors consistent with all family case plan objectives and is actively engaged to maintain objectives	-2
<input type="checkbox"/>	<input type="checkbox"/> b. Demonstrates some new skills and behaviors consistent with family case plan objectives and is actively engaged in activities to achieve objectives	-1
<input type="checkbox"/>	<input type="checkbox"/> c. Minimally demonstrates new skills and behaviors consistent with case plan objectives and/or has been inconsistently engaged in obtaining the objectives specified in the case plan	0
<input type="checkbox"/>	<input type="checkbox"/> d. Does not demonstrate new skills and behaviors consistent with case plan objectives and/or refuses engagement	4
<input type="checkbox"/>	<input type="checkbox"/> No secondary caregiver	
	Total Score	_____

REUNIFICATION RISK LEVEL

Assign the risk level based on the following chart.

Score	Risk Level
-2 to 1	<input type="checkbox"/> Low
2-3	<input type="checkbox"/> Moderate
4-5	<input type="checkbox"/> High
6+	<input type="checkbox"/> Very High

OVERRIDES

Policy Overrides (increases risk level to very high): Indicate whether any of the following are true in the current review period.

- 1. Sexual abuse; perpetrator has access to child and has not successfully completed treatment.
- 2. Non-accidental physical injury to an infant, and caregiver has not successfully completed treatment.
- 3. Serious non-accidental physical injury requiring hospital or medical treatment, and caregiver has not successfully completed treatment.
- 4. Death of a sibling as a result of abuse or neglect in the household, and caregiver has not successfully completed treatment.

Discretionary Override (risk level may be adjusted up or down one level)

Override Risk Level: Lower Higher

Reason: _____

FINAL REUNIFICATION RISK LEVEL (mark one):

Low Moderate High Very High

Supervisor’s Review/Approval of Discretionary Override:

Date: _____/_____/_____

B. VISITATION PLAN EVALUATION

Evaluate compliance with the planned visitation frequency and the quality of visits, based on the worker’s direct observation whenever possible and supplemented by observation of the child, reports by foster parents, etc.

Visitation Frequency Compliance With Visitation Plan	Quality of Face-to-Face Visit	
	Strong/ Adequate	Limited/ Destructive
Total		
Routine		
Sporadic		
Rare or Never		

Shaded cells indicate acceptable visitation.

Overrides

Policy: Visitation is supervised for safety.

Discretionary (reason): _____

IF RISK LEVEL IS LOW OR MODERATE AND CAREGIVER HAS ATTAINED AN ACCEPTABLE LEVEL OF COMPLIANCE WITH VISITATION PLAN, CONTINUE TO SECTION C, REUNIFICATION SAFETY ASSESSMENT.

IF RISK LEVEL IS HIGH OR VERY HIGH AND/OR VISITATION IS UNACCEPTABLE, GO TO SECTION D, PLACEMENT/PERMANENCY PLAN GUIDELINES. DO NOT COMPLETE SECTION C.

C. REUNIFICATION SAFETY ASSESSMENT

Safety Threats

1. Are any safety threats identified on the safety assessment that resulted in the child's removal still present?

- a. No; list the initial safety threats and describe below how the initial safety threat(s) was ameliorated or mitigated after the child's removal.
- b. Yes; list and describe safety threat(s) as it currently exists below.

Describe: _____

1a. If yes, is there a safety intervention that can and will be incorporated into the case plan to mitigate these safety threats?

- No; there are no safety interventions available and appropriate to mitigate safety concerns if the child were to be reunified at this time.
- Yes; one or more safety interventions have been identified to mitigate safety concerns and allow reunification to proceed with an in-home safety plan in place.

Describe: _____

2. Have any new safety threats been identified since the child's removal or are there any other circumstances or conditions present in the reunification household that, if the child were returned home, would present an immediate danger of serious harm?

- a. No
- b. Yes

Describe: _____

2a. If yes, is there a safety intervention(s) that can and will be incorporated into the case plan to mitigate these safety threats?

- No; there are no safety interventions available and appropriate to mitigate safety concerns if the child were reunified at this time.
- Yes; one or more safety interventions have been identified to mitigate safety concerns and allow reunification to proceed with an in-home safety plan in place.

Describe: _____

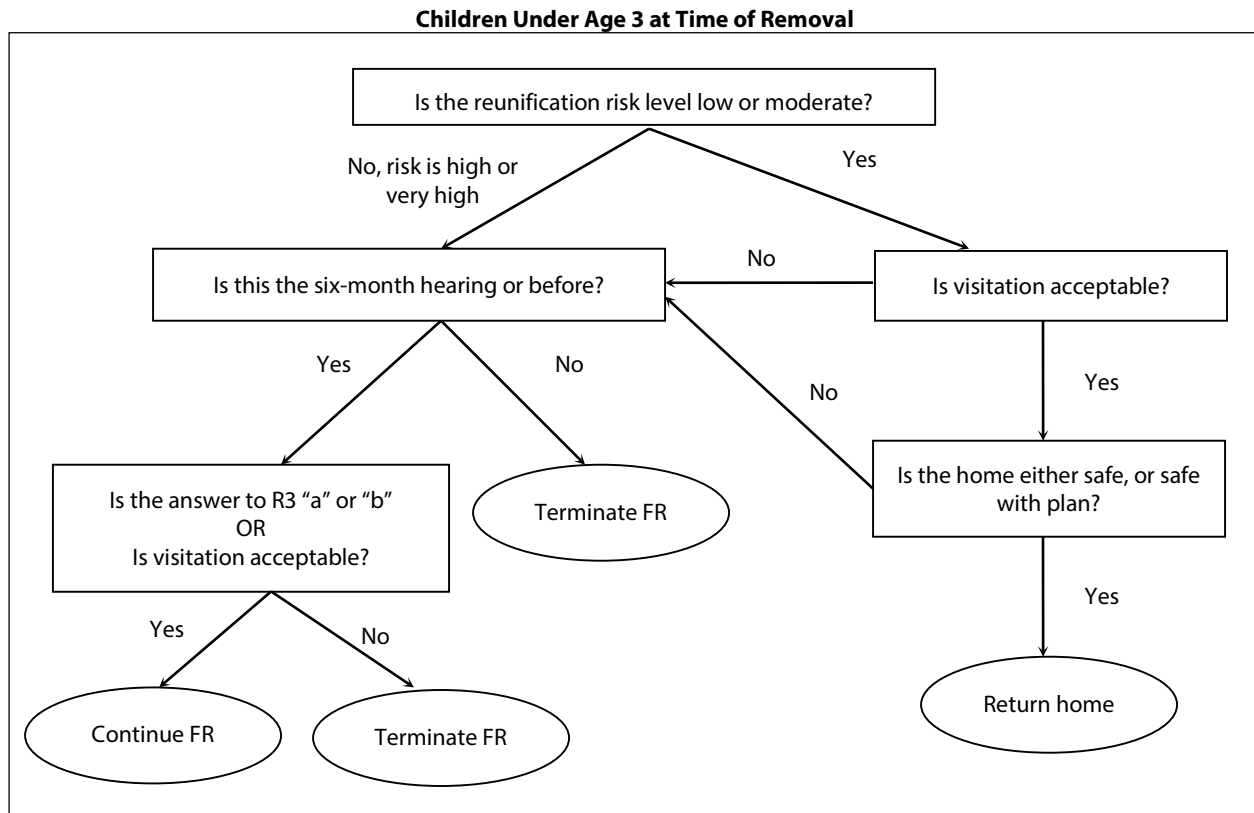
Safety Decision

Identify the safety decision by marking the appropriate line below. This decision should be based on the assessment of all safety threats, safety interventions, and any other information known about the case. Mark one line only.

- 1. Safe. No safety threats were identified at this time. Based on currently available information, there are no children likely to be in immediate danger of serious harm.
- 2. Safe with plan. One or more safety threats are present, and protective safety interventions have been planned or taken. Based on safety interventions, the child would be safe with a safety plan in place upon his/her return home. SAFETY PLAN REQUIRED.
- 3. Unsafe. One or more safety threats are present, and continued placement is the only protective intervention possible for one or more children. Without continued placement, one or more children will likely be in danger of immediate or serious harm.

D. PLACEMENT/PERMANENCY PLAN GUIDELINES

Complete one of the following trees for each child receiving family reunification services (FR), depending on whether he/she is over or under age 3, and enter the results in Section E. Consult with supervisor and appropriate statutes and regulations.



OVERRIDES (select one)

No override applicable (policy or discretionary).

Policy Override

- Child has been in placement for 15 of the last 22 months (change recommendation to "Terminate FR").
- The tree leads to "Terminate FR" and it is the six-month hearing or before, BUT there is a probability of reunification within six months (change recommendation to "Continue FR").
- The tree leads to "Continue FR," but conditions exist to recommend termination of FR (change recommendation to "Terminate FR").

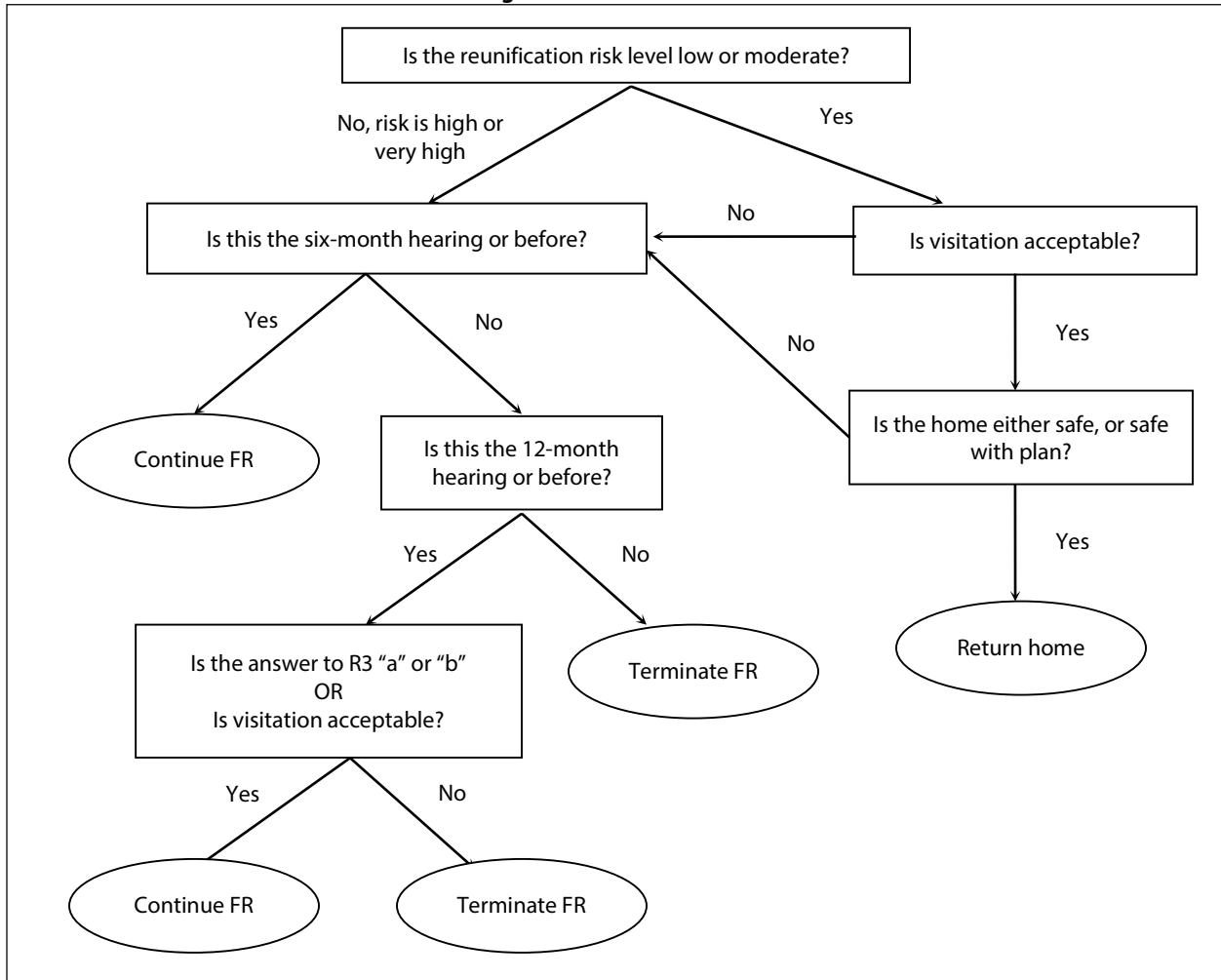
Specify: _____

Discretionary Override

- Change recommendation to:
- Return Home Continue FR Terminate FR

Specify: _____

Children Age 3 or Older at Time of Removal



OVERRIDES (select one)

- No override applicable (policy or discretionary).

Policy Override

- Child has been in placement for 15 of the last 22 months (change recommendation to "Terminate FR").
- The tree leads to "Terminate FR" and it is the 12-month hearing or before, BUT there is a probability of reunification within six months (change recommendation to "Continue FR").
- The tree leads to "Continue FR," but conditions exist to recommend termination of FR (change recommendation to "Terminate FR").

Specify: _____

Discretionary Override

- Change recommendation to:
 - Return Home
 - Continue FR
 - Terminate FR

Specify: _____

E. RECOMMENDATION SUMMARY

If recommendation is the same for all children, enter "all" under "Child #" and complete row 1 only.

Child #	Recommendation		
	Return Home	Continue Family Reunification Services	Terminate Family Reunification Services; Implement Permanent Alternative
1.			
2.			
3.			
4.			

F. SIBLING GROUP

If at least one child under the age of 3 at the time of removal has a recommendation of "terminate family reunification services" and at least one other child has any other recommendation, will all children be considered a sibling group when making the final permanency plan recommendation?

- No
- Yes. The recommendation for all children will be "terminate family reunification services."

If the decision is to return any children home, complete a safety assessment to document the plan for any children for whom safety threats were identified.